



Montgomery County Rat Terrier Club

2018

Issue 4

What's Inside

- 2. [This 'n that](#)
- 4. [Leaky Gut](#)
- 10. [Congratulations](#)
- 17. [Gut and Health](#)
- 23. [Pretty as a Picture](#)
- 24. [Heart and Food](#)
- 30. [Humor](#)
- 31. [Form and Function](#)
- 35. [New Rattitude](#)
- 36. [More Congratulations](#)
- 44. [Conformation Stats](#)
- 50. [Molly Yang](#)
- 52. [Blast to the Past](#)
- 53. [Amanda Hall art](#)
- 55. [AKC breed standard](#)
- 59. [Membership apps](#)
- 61. [Faces we adore](#)
- 62. [Doing what they do](#)
- 63. [Acronyms](#)



This 'n That ...

Did you know ... you do not have to live in the Montgomery County region to be a member of the club.

By joining you will find a supportive group of like minded friends who have Rat Terriers and who participate at a variety of events with their dogs. You don't even have to participate in any events to join and still find support from those who love the breed. All you need is to love the Rat Terrier breed. Finding sponsors is pretty easy, just ask and someone will step up. The application is at the back of this newsletter to make it easy for you and you can pay dues via PayPal or snail mail.

Right now our club newsletter is made public, but at some point that will probably not be the case. We welcome contributions in the form of brags about your dog successes in any event (AKC only for conformation), love photos of your dog just being a Rattie, and if you have ideas for something you'd like to see in the newsletter please let us know. Email any newsletter contributions directly to Sandra at midatlanticrtc@cox.net OR you can send to the club email at midatlanticratterrier@yahoo.com.

Cover photos by Claudia Rhodes (top) and Michele Sickles (bottom)



Photo by Erin Maize

Board of Directors

Amy Miskiewicz ~ President
Stacy McWilliams ~ Vice-President
Jackie Maye Olsen ~ Secretary
Judith Babarsky ~ Treasurer
John Capurso ~ Member At Large

©Montgomery County Rat Terrier Club
501(c)3 tax-exempt organization
2018
Printed in U.S.A. All Rights Reserved.

Contact:
MidAtlanticRatTerrier@yahoo.com

Editor: Sandra Ball ~ Arizona
Co-Editor: Jackie Maye Olsen ~ Pennsylvania

Contact email: MidAtlanticrtc@cox.net or midatlanticratterrier@yahoo.com

We are continually looking for photos, articles, and news to include in a future newsletter. Please send us anything that you think might be of interest. Providing us with URL links for potential items is welcome too. We LOVE photos of the Rat Terrier doing those things that they were bred to do, plus any of them doing the various performance events (Lure coursing, Barn Hunt, rally or obedience, agility, and on and on). Help us make this newsletter something that you look forward to and want to keep.



Photo by Jackie Olsen



The Leaky Gut Epidemic: Why Your Dog's Allergy Treatment Doesn't Work



Does your dog suffer from allergies, itchy skin, chewed up feet or gooey ears?

Then he's in good company! Allergies are one of the most commonly diagnosed health issues in dogs. And they're one of the hardest issues to treat.

That's because conventional medicine only looks at the dog's skin and not the root cause. And as researchers are starting to spend more time looking at something called the microbiome, they're finding out why most conventional allergy treatments are doomed for failure.

Good Health Starts In The Gut

Inside your dog's digestive tract (and yours), is something called a microbiome. The microbiome is a colony of bacteria that live throughout your dog's body. But the largest – and most important – colony lives in your dog's intestines and gut.

The microbiome might not seem like a big deal, but it's a vital part of your dog's body. In fact, those bacteria outnumber your dog's own cells by 10 to 1. And there are 100 trillion of these organisms in the gut alone.

You might have heard that 70% of the immune system resides in the gut. That's because the microbiome in the gut plays a key role in your dog's immune system function. It's like a virtual organ that plays a massive role in your dog's health and immunity.

But if your dog's microbiome isn't healthy, your dog can't be healthy. This is why most allergy drugs, diets and treatments won't work in the long run – they all harm the delicate balance in his microbiome, which makes him *more* likely to suffer from allergies and other autoimmune diseases.

The Key Functions Of Microbiome

The bacteria in your dog's microbiome have a few key functions in your dog's body:

1. They help manufacture important nutrients.

For example, the bacteria in your dog's gut are responsible for producing much of your dog's vitamin K as well as some of the B vitamins.

2. They help with the absorption of nutrients.

The gut bacteria help absorb vitamins and other micronutrients that are critical to your dog's health.

3. They regulate the immune system.

T cells are an important part of the immune system and they can either increase or decrease inflammation in the body. When your dog is a puppy, the bacteria in his microbiome will help train the T cells to differentiate between friendly and harmful bacteria. This primes his immune system for the future.

4. They strengthen the gut lining.

Gut bacteria produce fatty acids to keep the intestinal lining strong.

If all is going well with the microbiome, all will be well with your dog. But if the colony of bacteria gets out of control, then they'll start attacking your dog's body for their own survival.

And that's when your dog's health will suffer.

A Delicate Balance

There are two kinds of bacteria in your dog's microbiome: friendly and harmful. And the balance between these bacteria is critical – and easy to disrupt.

6 Causes Of Microbiome Damage:

1. Antibiotics

The problem with antibiotics is that they indiscriminately kill both harmful and friendly bacteria. This not only disrupts their balance, but can wipe out the entire colony, leaving only the resistant germs, which can grow and multiply. Even if your dog hasn't taken antibiotics before, if he's eating food from conventionally raised animals, he'll be consuming the antibiotics the cows or chickens he eats were given.

2. NSAIDs Drugs and Chemicals

These all inhibit the growth of friendly bacteria.

3. Steroids

Steroids inhibit many important gut functions, suppress the immune system and can lead to a proliferation of harmful bacteria.

Vaccines

Disrupt the immune system and inhibit the growth of friendly bacteria.

4. Stress

If your dog spends long hours alone or suffers from other chronic stressors, this will make him more susceptible to an imbalanced microbiome.

5. Diet

Dogs eating processed diets or diets high in carbohydrates (and any kibble on the market will be high in carbohydrates) will have unbalanced gut flora. Carbohydrates, especially those with a higher glycemic load, are the preferred food for many harmful bacteria. Grains and carbohydrates will also cause an overgrowth of fungus and yeast. Dairy products, genetically modified (GMO) foods, preservatives, coloring and chlorinated water can also harm the microbiome.

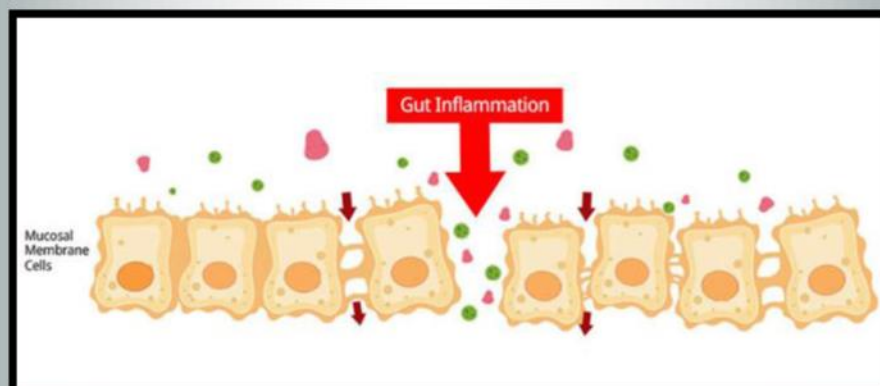
When the bacteria in the microbiome become unbalanced, the result is called dysbiosis. And dysbiosis can create or worsen allergies through something called leaky gut.

Leaky Gut: A New Epidemic

When harmful bacteria are allowed to proliferate, they can cause leaky gut. Leaky gut is just what it sounds like – holes can develop in your dog's gut lining, allowing the intestinal contents to "leak" into the bloodstream.

The lining of the gut, called the mucosal lining, becomes irritated and inflamed when dysbiosis occurs. This inflammation causes the cells lining the intestines, called enterocytes, to separate. When this happens, bacteria, fungus and undigested food start to leak into the bloodstream.

Undigested proteins are not supposed to be in the bloodstream. When they do enter it, the immune system ramps up and attacks and neutralizes them. Sometimes, the antigen from the foreign protein can look like the structure of one of the body's own tissue proteins. This is called molecular mimicry and can cause the body to create antibodies against itself, which is the cause of autoimmunity and allergies.



Leaky gut can also result in bacteria passing through the gut lining, as well as bacterial neurotoxins called lipopolysaccharides. These definitely don't belong in your dog's bloodstream and they circulate to the liver, kidneys, heart and other organs where they cause chronic inflammation and disease.

So leaky gut doesn't just cause allergies and the hypersensitivity disorders – it creates autoimmunity, which is the root cause of a myriad of common health issues including:

- Joint pain**
- Thyroid disease**
- Heart disease**
- Nervous system and eye disorders**
- Inflammatory bowel disease**
- Collapsing trachea and laryngeal paralysis**
- Liver, gallbladder and pancreatic disorders**
- Behavioral issues (your dogs gut and brain actually communicate via the endocrine system)**
- Cancer**

As researchers are learning more about the microbiome and its delicate balance, it's becoming clear that leaky gut is one of the most significant and preventable diseases in dogs (and humans).

Getting To The Root Cause

If your dog's allergies are caused by leaky gut, it's short sighted – and ultimately dangerous – to treat his skin conditions with antibiotic creams and steroids. It's also a terrible idea to feed your dog prescription allergy diets because they're loaded with carbohydrates and preservatives, which will only harm the microbiome and worsen the leaky gut.

If you really want to rid your dog of his allergies for good, stop treating his skin and immune system – and start treating his gut!

10 Steps To Help Prevent And Repair Leaky Gut:

- 1. Stop the drugs and medications: Find a good holistic or homeopathic vet who can get your dog off the toxic flea meds and drugs. They all damage your dog's gut. [Click here to learn more about the dangers of these products.](#)**
- 2. Never give an unnecessary vaccine: Once an adult dog has responded to a vaccine, research shows he doesn't need any more. Instead of revaccinating, ask your vet to run a titer test first to see if he needs that vaccine (chances are, he's already protected and doesn't). [Click here for more information on titer testing.](#)**
- 3. Reduce your dog's stress: If he's home alone, get him a companion or take him to daycare.**
- 4. Stop feeding kibble: Kibbles require at least 30% carbohydrate to hold them together. Carbohydrates fuel harmful bacteria, so a fresh, raw diet is a better option. Grains also contain lectins, which irritate the gut. If you must feed grains, make sure they're sprouted grains (but only once your dog's gut is healed and his allergy symptoms are gone).**

5. **Stop feeding processed foods:** Processed foods contain preservatives, genetically modified ingredients (such as alfalfa, soy, corn and canola oil) and colors that harm the microbiome.
6. **Feed your dog organic foods:** Organic vegetables will be free of harmful pesticides and organic meats will be free of antibiotics.
7. **Avoid anti-nutrients:** Many kibbles contain mycotoxins, which are molds that can cause severe gut and autoimmune reactions. Peanut butter also contains mycotoxins.
8. **Give your dogs probiotics:** Help your dog recolonize the friendly bacteria with probiotics. These can come from foods such as kefir and fermented foods, and from store-bought probiotics. Be careful because many probiotics actually contain allergens that can worsen your dog's symptoms. Avoid dairy based probiotics or those containing *Lactobacillus casei*, *Lactobacillus reuteri*, and *Lactobacillus bulgaricus*.
9. **Give your dog prebiotics:** Prebiotics help the gut bacteria produce fatty acids that protect the mucosal cells in the intestinal lining.
10. **Give you dog digestive enzymes:** Digestive enzymes help break food down so its nutrients can be absorbed. Leaky gut causes these enzymes to stop working so they need to be added back into the diet. Grains and legumes also inhibit digestive enzymes so remove those from your dog's diet (and stop feeding kibble because the enzymes in the food have all been killed during the processing, making your dog enzyme deficient).

So if you're frustrated with your dog's allergy treatments, start treating his gut instead. As long as those undigested proteins and harmful bacteria leak through your dog's gut, his immune system will be kicked into overdrive and his allergy symptoms will remain.

Those allergy drugs, anti-itch creams and fancy allergy kibble do nothing but kick the beehive – so treat your dog's leaky gut today and fix his allergies at the source.

About the Author

Dana Scott is the Founder and CEO of Dogs Naturally Magazine. She also breeds award winning Labrador Retrievers under the Fallriver prefix. Dana has been a raw feeding, natural rearing breeder since the 90's and is a sought after speaker and outspoken advocate for natural health care for dogs and people. Dana works tirelessly to educate pet owners so they can influence veterinary medicine and change current vaccine, food and preventive health practices. Visit Dana's Labradors at Fallriver Labs

<https://www.dogsnaturallymagazine.com/why-your-dogs-allergy-treatment-doesnt-work/>

Reprinted with Permission



Pox and Crossbones

Photo by Ashley MK

WAY TO GO!!!



Tazer (NBISS GCH CH Timberland Tazer) won the 2018 RTCA National Specialty on September 22, 2018 at the Arapahoe Kennel Club show in Aurora, Colorado. He was expertly shown by Dixie Rae Sick and also earned his GCH title.

Tazer is owned by Beth Ann Amico and Stacy McWilliams.

~ Oklahoma ~



FANTASTIC!!!



GCHS River Ridge's When Dreams Take Flight won Best of Breed at the National Dog Show in Philadelphia, PA. He is shown by owner/handler Stacy McWilliams. Owned by Jane Gardner, Stacy Zimmerman, and Dee Mapley.

~ Pennsylvania ~



Drum Roll!!



CH. Rosethorn the Award goes to River Ridge aka Emmy went Best of Opposite Sex at the Montgomery County Kennel Club All Terrier dog show for a 3 point major. During the Montgomery cluster, Emmy went Best of Opposite Sex two more times and Select Bitch at one of the shows. She had a great weekend raking in 11 points towards her Grand Champion title and 3 Majors!!

Emmy is bred by Candace Drake of Rosethorn Terriers and owned by Jackie Olsen and Stacy McWilliams.

~ Pennsylvania ~

Congratulations!!



GRCH UWP UCA PTE Bur-Way After the Storm at KTR CGC CAX CL1-R CL1-F MBM FGDCh, Bree aka Wild Child, earned her NAFA Flyball Grand Champion (30,000 points) title on September 28, 2018. I want to thank her breeder, Barbie Trammell of Bur-Way Stars Rat Terriers, for breeding such an amazing girl and allowing her to come live with me. She always gives at least 110% in any sports I ask her to compete in. She is now 27th of all time point earning Rat Terriers of NAFA. She is also 5th ranked of all breeds in NAFA for points earned this fiscal year. She is in 2nd place this fiscal year to date for Region 5 of all breeds.

Breeder: Barbie Trammell of Bur-Way Stars Rat Terriers

Owner/Handler: Beverly Calhoun

Texas



River Ridge Total Eclipse of the Heart aka "Saros" was Best In Show puppy at Westchester Kennel club of New Jersey. He was Winner's Dog at the Montgomery County Kennel Club All Terrier show for a 4 point major at 6 months of age and a 3 point major at Penn Treaty Kennel Club as Winners Dog. Owned by Ted Vida, Jerry Barlet, and Stacy McWilliams.

~ Pennsylvania ~



Send us your brags for next quarters news-

AWESOME!!!



Miss Ginny Weasley passed her Canine Good Citizen test on October 27, 2018 at the Kennel Club of Riverside. Ginny was adopted from New Ratitude a few years ago.

Owned by Barbara Jordon
Loved by Barbara and Don Jordon
~ California ~

GOOD JOB GINNY!!!!

STUPENDOUS!!!



U-CD, U-RO3, U-ACHX NCs Hello Dottie OMAX RE MX MXB MXJ MXJB T2B CAA CGCA BCAT
TKN DN CDX-C RL3 FGDCH-100 MBMCh RATCHX3 CZ8S aka "Dottie"

At the Timber Ridge Club Agility trial, under Judge Ronda Bumke, on September 2 Dottie earned her MACH. It has been 8+ years in the making and sooooo many people to thank that helped us get here. I am beyond amazed by what this little girl as achieved.

Owned by Pat Nickolaou

~ Minnesota ~



“What do ya’ wanna do now Astro?”

Photo by Claudia Rhodes

Derby and Astro

Your Dog's Gut Controls His Health: Here's How ...

By Julia Henriques



No guts, no glory!

The old adage is true when it comes to your dog's health ... your dog can't be healthy without a healthy gut.

Trillions of tiny organisms live inside your **dog's gut**. In fact, they outnumber your dog's own cells by ten times.

These organisms include bacteria, viruses and fungi. They live in the mouth, respiratory tract, small and large intestines.

Together, these communities of tiny guests are called the **microbiome**. But these guests aren't freeloaders ...

They carry an array of benefits for their host (your dog). In fact, they're so important to your dog's health, they form most of his immune system.

Let's take a look at why it's critical to **keep your dog's gut healthy** ... and the things you could do to harm it.

1. Gut Bacteria Crowd Out Pathogenic Bacteria And Fungi

Most of the bacteria living in your dog's gut are friendly, healthy bacteria. They form little neighborhoods (microbiomes) and that's a good thing (as you'll find out).

Let's say your dog is bitten by a tick-infested with Lyme bacteria. Or he raids the garbage can and devours a Salmonella filled chicken carcass.

Those harmful, pathogenic bacteria will enter your dog.

But bacteria need food and resources to live. And if your dog is lucky, he has trillions of friendly bacteria already in his gut. The friendly bacteria will compete for resources with the harmful bacteria, starving the bad bacteria to keep your dog healthy. The good bacteria can also protect your dog from fungi like yeast as well as parasites in his gut.

If your dog is lucky, he has trillions of friendly bacteria already in his gut. The friendly bacteria will compete for resources with the harmful bacteria, starving the bad bacteria to keep your dog healthy.

But if your dog has an imbalance of gut bacteria and there aren't enough good bacteria to defend him from the bad guys, this is known as dysbiosis. Your dog will be more susceptible to disease and infection

Dysbiosis can also lead to a more serious condition called Leaky Gut Syndrome and I'll talk about that in more detail below.

2. Gut Bacteria Produce Short Chain Fatty Acids

Short-chain fatty acids (SCFA) are molecules that are produced when dietary fiber ferments in the colon. And friendly gut bacteria are what causes the fermentation.

SCFA provide food for the cells that line your dog's colon and are important to maintain colon health. They boost the mucous membrane layer in the gut, protecting the intestinal lining against pathogens. They also help move food through the large intestine and are an essential part of nutrient absorption. SCFA boost muscle activity, blood flow and water absorption in the colon.

Short chain fatty acids can help protect against diseases like inflammatory bowel disease, heart disease and obesity. So as well as a healthy population of good gut bacteria, it's important for your dog to have sources of fiber in his diet for the production of SCFA.

3. Gut Bacteria Prevent Leaky Gut Syndrome

Remember we talked earlier about dysbiosis ... when the friendly vs bad bacteria in your dog's gut is out of balance? Dysbiosis can be caused by many things ... like poor diet, antibiotics, steroids, vaccines, flea and tick products and other drugs ... and can lead to Leaky Gut Syndrome.

Your dog's intestinal wall is lined with a delicate mucous membrane that allows digested nutrients to enter the bloodstream. Think of it like a cheesecloth that only lets tiny particles through. This "cheesecloth" also protects the bloodstream from pathogens and undigested food.

But when your dog has dysbiosis, the mucosa can become inflamed. This causes the holes in the cheesecloth to get stretched out, letting larger food particles, bacteria and toxins through into the bloodstream.

This is Leaky Gut Syndrome. The condition sets off a chain reaction in the body: the liver has to work harder to screen out the particles; the immune system tries to prevent the invaders but can't keep up. The result is inflammation which can lead to many types of disease, including skin issues, food sensitivities and allergies, chronic digestive and other disorders, and even autoimmune disease and arthritis.

4. The Bugs In The Gut Talk To The Brain

The gut, including its myriad of bacteria, is known as "the second brain" and there's a very good reason for that. Your dog's gut and brain are intimately connected. The gut-brain axis (GBA) links the emotional and cognitive centers of the brain with the gut.

The communication goes both ways – from the gut to the brain and from the brain to the gut. So when you're anxious you get "butterflies" in your stomach. And if you have poor intestinal health, it can affect your mood or stress levels. It's the same for your dog. His gut health can affect the level of anxiety or stress he feels. So if your dog's friendly bacteria isn't keeping his digestive system healthy, he may not just show it by having diarrhea or a stomach ache, but also through the way he feels mentally.

<https://www.dogsnaturallymagazine.com/your-dogs-gut-controls-his-health-heres-how/>

Every time your dog eats, the GBA sends messages up to his brain. This affects his emotional state. Research shows that a healthy gut affects motivation and higher cognitive functions.

On the flip side, a disruption of the GBA can cause mood disorders like depression and anxiety. This disruption includes disorders like dysbiosis and irritable bowel syndrome.

It's also likely that poor gut health can contribute to behavior issues. Improved gut health has been shown to help children with autism, and there's research suggesting dog behavior can also be affected by digestive health.

HOW YOUR DOG'S GUT CONTROLS HIS HEALTH

Trillions of tiny organisms live inside your dog's gut. In fact, they outnumber your dog's own cells by ten times. **AND THEY CONTROL YOUR DOG'S HEALTH.**

BRAIN
The gut is known as "the second brain" and the gut-brain axis links the emotional and cognitive centers of the brain with the gut. Gut health directly impacts mood and behavior.

LIVER
If your dog has leaky gut, the liver has to work harder to screen out the particles, causing stress on this organ.

GUT
It all happens here ...

BOWEL
Irritable bowel is directly linked to gut health and an imbalance in gut bacteria.

HEART
The gut's responsible for the production of short-chain fatty acids that protect against heart disease and obesity.

SKIN
Poor gut health is linked to skin disease, like allergies. A compromised immune system can't fight these conditions.

HOW TO HEAL THE GUT

- FEED A FRESH, WHOLE FOOD DIET**
- FEED PRE-G PROBIOTICS**
- AVOID ANTIBIOTICS, STEROIDS & UNNECESSARY VACCINES**

dogs naturally

What's Harming The Gut And How Can You Heal It?

Now that you know what an unhealthy gut can lead to, how can you heal it?

First, you have to know what harms it.

There are 2 major things that do **damage to the gut**:

- the foods we feed our dogs
- the meds we give them

Here are some things you can do to heal the gut:

1. Feed a fresh, whole food diet

A raw diet promotes a healthier gut microflora.

Bad bacteria and yeast are what harm your dog's gut. Carbohydrates and starches like grains, potatoes and sweet potatoes, are essentially sugar. Sugar feeds yeast. And grains turn into sugar and are considered pro-inflammatory.

When your dog eats grains, he has a constant level of inflammation in his gut. Read between the lines here: kibble is not your dog's friend.

Switch to a raw, fresh, whole food diet. Raw, fresh, foods (meat, vegetables, fruit) provide a source of natural microbes for your dog. Research shows that a raw diet promotes a more balanced growth of bacteria in the gut.

Nervous about feeding raw? Don't be.

2. Use probiotics

Probiotics are the good bacteria that live in your dog's body. Inflammation kills these bacteria and leads to problems. You need to rebalance the good bacteria to kill the bad.

Probiotics also support the immune system so you can give them to your dog to support overall health.

If you're switching to raw, probiotics can also help with the transition.

You can choose a probiotic supplement or use food to get these good bacteria into the gut:

Fermented vegetables – buy organic or make your own. Start out slowly and work up to 1 tsp per 15 lbs of body weight. Add them to your dog's food daily or feed as a snack.

Raw goat milk -feed it daily according to body weight:

- Up to 20 lbs – 2 oz
- 20 to 50 lbs – 4 oz
- Over 50 lbs – 6 oz

Kefir (organic, unsweetened) – give 1/4 cup per 25 lbs of body weight daily.

You'll also want to feed the probiotics with prebiotics. They're the food probiotics need to grow. Add some apples, bananas, garlic, dandelion greens and asparagus on a regular basis. You can also get a good pre- and probiotic supplement in one.

3. Avoid antibiotics, steroids and unnecessary vaccines

Prescription antibiotics devastate friendly bacteria. They can't tell the difference between the good and bad bacteria and plow through the gut like a bull in a china shop. They either kill the bacteria outright or stop them from multiplying.

And antibiotic use starts a vicious cycle of destruction. Since about 80% of your dog's immune system is in his gut, an unhealthy gut means a lowered ability to resist disease. Your dog gets sick. You use antibiotics to treat the illness. Those antibiotics suppress the illness and at the same time kill good bacteria. Now your dog is more vulnerable to illness. He gets sick again ...

Steroids also inhibit many important gut functions. They suppress the immune system and can lead to a proliferation of harmful bacteria.

Vaccines disrupt the immune system and stop the friendly bacteria from multiplying. Over-vaccination is a major cause of poor gut health. Titer test for immunity before adding more toxic chemicals from vaccines. Find more on titer testing [here](#).

Your dog's gut is a powerhouse of friendly defenders. The colonies of bacteria are essential to overall health.

If these colonies are attacked and compromised, they won't be able to protect your dog. If the gut microbiome isn't healthy, your dog is vulnerable to all kinds of health concerns. Protect your dog's gut to protect your dog.

About the Author Julia Henriques

Julia Henriques is Managing Editor of Dogs Naturally Magazine. She's on the Board of Playing Again Sams (Wisconsin Samoyed Rescue) where she enjoys helping adopters and group members choose more natural health care options for their dogs. She lives in Chicago with her partner Marc and two rescue Samoyeds. Reprinted with permission.

Pretty as a Picture



The Magic of Christmas
Photo by Sharon Austin Chavira

NEWS: FDA Reports Some Dog Foods May Cause Heart Disease



Is grain-free dog food linked to heart disease in dogs?

That's what the Food And Drug Administration (FDA) is trying to find out. The FDA is investigating reports of an increase in a deadly heart condition in dogs called dilated cardiomyopathy (DCM).

What's puzzling the FDA is that DCM is showing up in breeds that aren't usually genetically prone to the disease. So they're looking for other possible causes of the disease ...
... and they're targeting grain-free dog foods.

If your dog eats ANY commercial food, grain-free or not, you're going to want to read this.

The FDA, Diet And Heart Disease In Dogs

Dilated cardiomyopathy is typically seen in large and giant breed dogs. This includes Great Danes, Boxers, Irish Wolfhounds, Doberman Pinschers, Saint Bernards and Newfoundlands. Smaller breeds like Cocker Spaniels are also prone to DCM.

Recent reports show it in Golden and Labrador Retrievers, Whippets, Shih Tzus, Bulldogs and Miniature Schnauzers.

And the FDA thinks their diet may be to blame.

FDA INVESTIGATING POTENTIAL CONNECTION BETWEEN DIET AND CASES OF CANINE HEART DISEASE

The U.S. Food and Drug Administration is alerting pet owners and veterinary professionals about reports of canine dilated cardiomyopathy (DCM) in dogs eating certain pet foods containing peas, lentils, other legume seeds, or potatoes as main ingredients. These reports are unusual because DCM is occurring in breeds not typically genetically prone to the disease. The FDA's Center for Veterinary Medicine and the Veterinary Laboratory Investigation and Response Network, a collaboration of government and veterinary diagnostic laboratories, are investigating

What Is Dilated Cardiomyopathy In Dogs?

Dilated cardiomyopathy (DCM) is a type of heart disease in dogs. It's also known as an enlarged heart.

With DCM, both the upper and lower chambers of the heart become enlarged. The muscles become weak and the heart can't pump blood as well as it needs to. When this happens, fluid builds up in the lungs and the hearts gets overloaded. This leads to congestive heart failure.

Early signs of dilated cardiomyopathy in dogs can be hard to spot. You can keep an eye out for:

- less interest in exercise
- lower exercise tolerance
- increased breathing rate
- excess panting
- coughing
- weakness
- fainting episodes

Or your vet may notice a slight heart murmur or irregular heart rhythm.

Is Grain-Free Dog Food To Blame?

The dogs in the reports ate grain-free foods "as their primary source of nutrition" for months to years.

So why does the FDA think diet is the cause of this dangerous form of heart disease? The dogs in the reports have something important in common ...

... all the affect dogs are eating foods that contain these specific ingredients:

- peas
- lentils
- other legume seeds
- potatoes

These ingredients are most commonly found in grain-free foods.

The dogs in the reports ate grain-free foods “as their primary source of nutrition” for months to years.

At this point, the FDA is investigating the link. They haven’t said how these foods are linked to DCM. They also haven’t listed any specific brands.

We spoke with veterinary nutrition expert Marion Smart DVM PhD about the investigation. Dr Smart’s take: it’s more complicated than some might think. And more research is definitely needed.

“This may relate to the way the pulses are grown. The fertilizers, the chemicals and the growing conditions may all be factors. They could be altering the plants’ metabolism and the number of anti-metabolites present.” says Smart.

“There’s also the potential for some of these chemicals to be taken into the animal’s body. This could alter the ability to metabolize potential toxins or chelate important minerals. It could perhaps even denature proteins. Feed-grade pulses that are not suitable for human consumption could also play a role. These pulses may be immature, carry imperfections or could be contaminated with mycotoxins (a dangerous mold). They could even be tainted with some of the chemicals used to grow or desiccate them.”

As you can see, it’s not a simple study, and it’s not a simple answer. Researchers have to look at a lot of variables to get a concrete answer.

Taurine Deficiency And Grain-Free Dog Food

This isn’t the first time we’ve heard about grain-free diets and heart disease in dogs. Grain-free foods have also been [linked to taurine deficiency](#).

Taurine is an amino acid that dogs need for the development and function of their heart muscle cells. It’s also important for eye, brain and immune health. It’s found naturally in raw meats and organs but you won’t find it in cooked foods (unless it’s added back in via a synthetic supplement).

Taurine is found in most animal proteins, especially in the brain and heart. Poultry, fish and liver are great sources of taurine; hooved animals, eggs and milk contain lower amounts. There’s almost no taurine in most plant proteins, so vegetarian and vegan diets can cause a taurine deficiency. Cooking and processing also reduce the taurine content ... that’s why many processed foods include synthetic taurine supplements. Some [research](#) says that DCM may be related to a nutritional deficiency in taurine in some dogs.

CONCLUSIONS AND CLINICAL RELEVANCE

Results suggest that consumption of certain commercial diets may be associated with low blood or plasma taurine concentrations and DCM in dogs. Taurine supplementation may result in prolonged survival times in these dogs, which is not typical for dogs with DCM.

Four of the cases the FDA is studying showed low blood levels of the amino acid taurine. One of the dogs is recovering with treatment that includes a change in diet, plus taurine supplementation. But four other cases had normal blood taurine levels.

So lack of taurine wasn't the issue in half these FDA examples.

We need to gather more information on the link between DCM and pet food. But that doesn't mean grain-free kibble is safe. Not by a long shot.

Plus, there are a ton of reasons not to feed any type of kibble to your dog.

"We need to gather more information on the link between DCM and pet food. But that doesn't mean grain-free kibble is safe. Not by a long shot."

Get Away From Kibble

Kibble, whether it's grain-free or not, is not good for your dog. And there are several reasons why.

1. Kibble is dead food.

Kibble is cooked and extrusion is the main method manufacturers use. This heating and processing destroy the nutrients in the food. And for most kibbles, the manufacturing process requires the food to be heated four times. That means, by the time it hits the bag (which could sit on the shelf for months), virtually all the nutrition is gone.

To "put" the nutrition back in, manufacturers add vitamins and minerals to the food. But these aren't real vitamins and minerals – they're synthetic. They're manufactured in a lab. And they contain only a fraction of what's found in naturally occurring vitamins.

2. Kibble contains aflatoxins.

Aflatoxins are poisonous carcinogens that come from mold. They're common in grains like corn, wheat and rice as well as nuts and legumes. They're usually a result of poor growing conditions or substandard storage.

Aflatoxins in dry dog food have caused serious health concerns over the past few years. In 1952, the deaths of several dogs from fatal liver disease were linked to aflatoxins in food. In 1998, 55 dogs died in Texas after eating dog food containing aflatoxin. A commercial dog food with aflatoxins caused the deaths of 23 dogs in the United States in 2005. Over the years, countless deaths have been directly linked to these molds. And experts say many more have gone unreported.

CONTAMINATED INGREDIENTS

Aflatoxins have elicited great public health concern because of their widespread occurrence in several dietary staples such as peanuts, tree nuts, corn, dried fruits, silage, and forages, all of which are used as animal feed ingredients. Monitoring these substrates for mycotoxins, especially AFBI, is crucial to prevent outbreaks of acute mycotoxicosis and to diminish exposure risk of animals and humans to these harmful toxins.

3. Kibble oxidizes, fast.

Oxidation occurs as soon as the oil in your dog's kibble comes into contact with oxygen from the environment. It's a chemical reaction that quickly produces rancidity.

This starts as soon as you open the bag. It loses its nutritional value and the fats begin to oxidize. And it gets worse every time you open it and expose the food to air.

Oxidation can also cause mold and bacteria to grow in the food. Rancid fats destroy vitamins, which can lead to vitamin deficiency.

NOTE: *Ever notice that expiry date on your bag of dog food? AAFCO requires pet food companies to put a "Best Before" date on bags. But companies don't actually have to say when the food was made. This means you have no way of knowing how long the food has been sitting on the shelf.*

Feed A Raw, Whole Food Diet

The FDA investigation continues and we'll keep you posted on any updates. In the meantime, there's plenty of research that already shows the dangers of kibble. Your dog's food needs to keep him healthy, not lead to future damage.

About the Author

Julia Henriques is Managing Editor of Dogs Naturally Magazine. She's on the Board of Playing Again Sams (Wisconsin Samoyed Rescue) where she enjoys helping adopters and group members choose more natural health care options for their dogs. She lives in Chicago with her partner Marc and two rescue Samoyeds.

Reprinted with Permission

<https://www.dogsnaturallymagazine.com/news-fda-reports-some-dog-foods-may-cause-heart-disease/>



Photo by Jennifer Chappell

Humor makes the world a better place



Shared by Riley Allen



By Gretchen Bernardi

In the insular world of dogs, it is easy to forget that the principle of form following function is universal. No less an authority than Frank Lloyd Wright said that the concept of form following function had been misunderstood, that "Form and function should be one, joined in a spiritual union." Who could argue with the great architect who also said of Marilyn Monroe: "I think Ms. Monroe's architecture is extremely good architecture."

The idea of form following function and of the "spiritual union" in Wright's buildings (though probably not Ms. Monroe's architecture) can be quantified and tested by science, having to do with load-bearing, stress, vapor movement, etc. We cherish the form and function dogma as the basis for the standards, because the testing of our dogs was done primarily by those who preceded us and the principles were based on performance, a sort of working science, in its way. When exhibiting or judging in the conformation ring, we cling to this belief that the standards we are interpreting will guide us in finding those dogs that could best fulfill their original purpose.

All of this makes sense. Why, then, is there such a wide and widening gap between our working dogs and our shows dogs, a gap that is becoming more evident as we are able to more readily observe the differences in breeds around the world? Why, in a culture that celebrates the idea of form following function, do we have such combative elements within parent clubs, with two almost different breeds emerging from the same gene pool?

This is an old argument; nothing new here. The field versus bench debate, which seems to come and go in cycles and in varying degrees of intensity, should begin with congratulations to those breeders who religiously test their dogs in the field and compete in the conformation ring as well. These people are the true believers in the form following function debate, because they can see what parts of their standards are meaningful and which are not. Congratulations are also in order for those parent clubs that encourage the dual-purpose dogs and reward those that excel in the ring and in the field. A warning: we cannot confuse true field work that is breed specific with those performance events that reward attributes that are inherent in all canines, even though it may be those very attributes that endear them to humans.

And another warning: some breeds can no longer be tested, however hard we try. Chasing a lure in a man-made pattern is not a test of a Borzoi or an Irish Wolfhound as it relates to these breeds' original demands. Lure-coursing for these breeds may be a test of many things—instinct for the chase, physical conditioning—but not for the ability to run down and kill a wolf. This is true for some other breeds as well, as laws and our own ethics prohibit some activities involving dogs.

This is not a new dilemma, of course. One of my favorite writers on all things canine, A.N. Hartley, worried about this in her book, *The Deerhound*, first published in 1955:

So now, with opportunities to exercise its legitimate calling vanishing, the breed was launched on the dangerous waters of the exhibition world; dangerous because breeds that can no longer be tried at the work for which they were originally intended are at the mercy of whims of fashion which may easily alter them out of all resemblance to their working prototype. Surely we cannot sit ringside at our dog shows without seeing the wisdom, and the sorrow, of those words.

Those of us who committed ourselves to breeds with clear-cut roles depend on our standards to define the link—this specific structure results in this particular result. We devoured all of the books that explained it and arrogantly saw the flaws in the dogs that, in our opinion, couldn't measure up. That Brittany couldn't be agile in the field, because it's legs are too short. That Basset Hound couldn't follow a trail all day because it has weak pasterns. That Shepherd couldn't sustain a working trot because it has a weak back. All of this conjecture is possible because we are committed to the idea that the characteristics laid out in the standards describe for us the requirements for doing the job. That is certainly a long and winding road to travel: from the men and women working their dogs and putting in writing what they thought was necessary, to our breeding dogs that met those physical requirements that were necessary to do the job, to finding the dogs in the show ring that have the characteristics that the original people thought were necessary. There is a lot of room for error in the traveling of that road. Just how committed are we to the concept that the requirements of our standards actually result in the dogs the breed originators were striving to produce?

In the 1970's, I was fortunate to have known the late Louis Pegram, the great proponent of and participant in Whippet racing. I loved the whole idea of form and function and those early days of organized sighthound lure-coursing gave all of us opportunity to talk the subject almost to death. I frequently asked Lou, who was also president of my all-breed kennel club and a respected author, just what structure, what specific conformation was required in a great racing Whippet. "Adequate," was always his reply. Adequate! That was certainly not what I wanted to hear. I wanted to hear about shoulder layback as it applies to reach, about low hocks as it applied to drive, about loins and pasterns and length of backs. Adequate was not a term I or any of my fellow enthusiasts could get worked up about.

We are all a little arrogant when we talk about the required structure in our dogs, considering how few of us really know what we're talking about. I have never heard a breeder or a judge state that the original purpose of a breed was irrelevant. I have never read a specialty critique in which the judge stated that a dog was incapable of fulfilling its original role, but she put it up anyway. In fact, most discussions of specific breeds usually begin with comments alluding to the dog's original purpose. No argument there. I just can't help wondering how well the standards themselves and our interpretations result in the dog we want to reward or breed from, if that is what we are truly interested in. Perhaps we believe in form and function in the abstract only. After that, things get a little hazy.

I was reminded of this recently as two pieces of writing came across my desk on this very subject. The first is the fascinating *Livestock Protection Dogs*, by Orysia Dawydiak and David Sims. The authors, a husband and wife team, are well-educated in their fields. Ms. Dawydiak, who has a degree in zoology and an advanced degree in animal science, works in the biomedical field. Mr. Sims has degrees in engineering and a Ph.D. in Veterinary Anatomy and is a professor at the Atlantic Veterinary College. But they are both breeders of Akbash and of sheep. In terms of knowledge applied to practice, it can't get much better than this.

The photos alone are worth the price of the book and the captions give an idea of their appeal: "A Kangal Dog sharing shade with a few sheep and shepherds," "India, a Great Pyrenees, and her alpaca friend," "An Adolescent Meremba shows submissive behavior when challenged by a ram," "Eight-week-old Slovakian Cuvac pup already started with sheep."

Although some of the breeds are either fully recognized by the AKC or in the Foundation Stock Service, most of these beautiful rare breeds are shown being picked, trained and worked at the very specific jobs for which they are bred and I wondered as I read the book and admired the photos just how much our standards equate with the performance abilities of the dogs. Although the authors carefully state that "All breeding stock must have a good working temperament, be sound and have a conformation which meets the official breed standard," they wisely state "...there is no compelling reason why you should be producing pups for livestock protection if your breeding stock have never seen sheep." To repeat: these experienced people believe that adherence to the breed standard is not sufficient to picking working type and abilities.

The authors give excellent pointers in picking puppies and have put together their own job-specific temperament test, in an effort to identify the best working type pups at an early age. But the emphasis throughout this book is on working dogs.

Even more to the point that I am trying to make—exactly how closely do our standards describe the working prototype—is an intriguing article written by an even more intriguing man, the late Dr. Dan Belkin. Titled "The Functional Saluki—Lessons from the Coursing Field," it is another example of the opinion of someone who has just the right credentials to make himself believable.

Dr. Belkin, who died of an inoperable brain tumor in 1988, was an evolutionary biologist who specialized in physiological and ethological ecology under a Research Fellowship at the University of Florida Medical School, where he also taught respiration and nutrition. A falconer and a Saluki fancier, he and his wife coursed and bred Salukis under the Bayt Shahin prefix.

Dr. Belkin's incredible intelligence and insight are evident on every page and that makes the following words frightening to me as a breeder and as a judge, made even more so because they are believable.

About judging: "Things you cannot see are more important than things you can."

About breeding: “Breeding to a standard will not preserve function. All it can preserve is appearance.”

About eyes: “The standard says ‘eyes, dark to hazel and bright, large and oval, but not prominent.’ It doesn’t say anything about whether or not the Saluki can see.”

About form and function: “People who have coursed dogs for any length of time learn that all their preconceived correlations between form and function have a lot of exceptions.”

About structure: “...visible, palatable aspects of conformation don’t mean as much as most people think they do. You can have apparently malformed, unsound looking dogs that you would swear couldn’t run perform brilliantly.”

And my favorite, about the foreleg: “The important thing about the forelegs is that they don’t break.”

And then he makes a terribly good argument for what may have gone wrong in the process of writing standards by good people with the best intentions:

“Most breed them to do some particular thing. They looked at them and said ‘This is what they should look like if they perform this function,’ and drew up a standard accordingly; sometimes very precise, sometimes not. Then they bred dogs to look like those which did that thing, instead of breeding them to do it. That’s fine if all they wanted was dogs with that look. But, if they expect those dogs to do what resulted in that look, they are going to be disappointed.”

Personally, I found those lines disturbing, because they upset my way of thinking and caused more than a few ripples of doubt about all my previous notions. My thinking life as a breeder and as a judge was simpler and far more comfortable before. Although my attitude towards our standards and our duty to adhere to them will not change, I will be forced to think about those words every time I say with presumed authority and conviction that line we so frequently use: “This dog could really do its job.” Or could it? We live in an imperfect world and we do our best to apply the meaning of dead words to living things. As breeders and as judges, we use the only tool available to us—the standards of excellence. If we sometimes come up short of even our own expectations, it is helpful to remember that learned scholars devote their lives to interpreting the United States Constitution and still come up with as many conclusions as there are scholars. But it doesn’t hurt to think about it.

Gretchen Bernardi • berwyck@ezl.com

*I recommend the writings mentioned above for anyone in the dog world. *Livestock Protection Dogs*, second edition is available from Alpine Publications, Loveland, Colorado. “*The Functional Saluki*” was based on a seminar given at the 1993 Saluki Club of America’s National Specialty and can be found at <http://saluqi.home.netcom.com/belkin.htm>. *The Deerhound* by A.N. Hartley is out of print, but can be found occasionally through rare and used book sources.*

Reprinted with Permission





Photo by Claudia Rhodes



New Rattitude

Rat Terrier Rescue



What New Rattitude is About

Since his rescue from a puppy mill, little 9-lb Harry has been delightedly learning about the good things in life. Having spent most, if not all, of his 13-year life in a small cage, Harry is just now experiencing things like soft grass and the loving touch of human hands, and he has quickly decided that snuggling and love are two things he can't have enough of!!

We are seeking adoptive homes. You can view our available dogs, see several photos and read their full bio at: <http://www.newrattitude.org/dogs.htm>. All New Rattitude dogs are neutered/spayed, wormed, checked for heartworm and on preventative, up to date on vaccinations, and microchipped. Adoption fee is \$175 for adult dogs and \$225 for puppies under six months of age.

All adoption fees go toward rescue and care of Rat Terriers in need.

New Rattitude has many opportunities available to those who are able to volunteer a little or a lot of their time and energies. We would love to have you join us. Simply submit a member application found on our site. We have a great retail store where you can purchase dog toys for less and the money supports the dogs in need. New Rattitude is a national, all-volunteer organization that rescues and rehomes Rat Terriers and Rat Terrier mixes. We are a tax-exempt, non-profit 501(c)3 charitable corporation. We were incorporated August 4, 2008, and are licensed by the Georgia Department of Agriculture.

<http://www.newrattitude.org>

Board of Directors

Terry Beale (Georgia) - President
Mallory Kratimenos (Illinois) - Vice President
Susan Beard (North Carolina) - Secretary
Sue Kangas (Michigan) - Treasurer
Debbie Collins (Alabama) - Director
Kathy Puckett (Maryland) - Director
Catherine Spannagel (Illinois) - Director

SENSATIONAL!!



On Dec. 2, 2018 River Ridge's Eye of the Storm "Fynn" earned his CA title at the Tortoise and Hare Lure Coursing Trial in Littlestown, PA.

Fynn's photo were taken by Steve Surfman

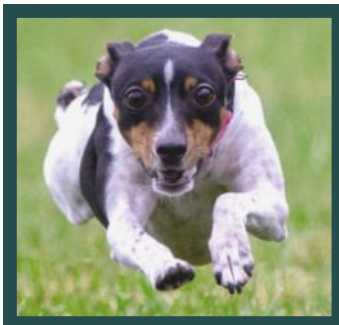
Owned by Karen McNally
~Maryland~



Find us on
Facebook



Way to go!!!



On November 3, 2018 River Ridge's Devilish Lass CCGA OA NAJ TKA CA FCAT aka "Tara" earned her FCAT at the Potomac Valley Standard Schnauzer Club in Union Bridge, MD. Then on December 8, 2018 Tara earned her 10th Q and CAA title at the Chesapeake Bay Area Rhodesian Ridgeback Club Lure Coursing Trial in Littlestown, PA .

Photographers are Steve Surfman and Terri Keiffer.

Owned by Karen McNally

~ Maryland ~

WOW!!!



On September 30, 2018 River Ridge's Made In America aka "Luke" CGCA OA OAJ TKA FCAT earned his FCAT at the Oriole Dog Training Club in Finksburg, MD.

Owned, handled and trained by David McNally

Photo credits for Luke's photo's Barking Mad Pet Picks,

~ Maryland ~

AMAZING!!!



All three of our River Ridge Rat Terriers have earned their FCAT's. River Ridge's Eye of the Storm "Fynn" (1st Rat Terrier to earn an FCAT Nationally), River Ridge's Devilish Lass "Tara" both owned by Karen McNally and River Ridge's Made in America "Luke" owned by David McNally.

~ Maryland ~

EXCEPTIONAL



Scout (River Ridge's Lookout CA, DCAT) earned his DCAT on October 14, 2018 at the Monticello NY Kennel Club in Augusta, NJ. Scout lives in New Jersey and is proudly owned by Loraine Capurso.

~~~~~



**Rocket (CH River Ridge Rocket Man CA, DCAT), earned his DCAT on October 21, 2018 at the Knickerbocker Standard Schnauzer Club Fast CAT Trials in Somerset,, NJ. Rocket lives in New Jersey and is proudly owned by Loraine Capurso and Stacy McWilliams.**





Photo by Vickey Meyer

# The Faces of PLL

(Primary Lens Luxation)

**This can be prevented if breeders test before they breed (many do).  
This can be treated if the owner tests a dog from unknown or untested parents.**

**A simple genetic test with a swab and analyzed by a qualified laboratory can  
provide a pet owner with invaluable information about what must be monitored  
and budgeted for in the future.**

**A few laboratories are (this is not all-inclusive):**

**[pawprintgenetics.com](http://pawprintgenetics.com)**

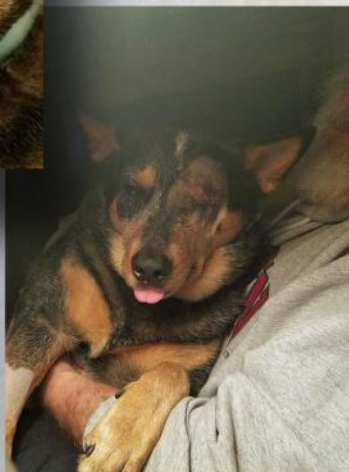
**[gensoldx.com](http://gensoldx.com)**

**[optigen.com](http://optigen.com)**

**Many more breeds are affected as well.**



**Jack**  
(Australian Cattle Dog)



**Lily**  
(Rat Terrier)





Photo by Jennifer Chappell

# The STATISTICS

## Conformation

### AKC OWNER-HANDLER TOP FIFTEEN STANDINGS

2018 Rat Terriers

The Canine Chronicle  
Thru November 30, 2018

| Rank | Dog Name                                             | Owner-Handled Name                                           | Breed       | OHS Points |
|------|------------------------------------------------------|--------------------------------------------------------------|-------------|------------|
| 1    | GCHS CH River Ridge s When Dreams Take Flight        | Stacy McWilliams Jane Gardner Deena Mapley<br>Denise Hileman | Rat Terrier | 395        |
| 2    | GCH CH Wild Heart Take A Chance On Me River Ridge CA | CAYLA WALLWORK Stacy McWilliams                              | Rat Terrier | 205        |
| 3    | GCHB CH Golden Hills Genuine Reflection Buzablu      | Ms. Alma Therese Burns Linda Kay Lee                         | Rat Terrier | 195        |
| 4    | Raganrat Yamada Feel The Burn CA BCAT                | Michelle Blackmore                                           | Rat Terrier | 155        |
| 4    | GCH CH Felixvilles Skippin Cj Lucky Traveling Gal    | Mr. Jason Sharp Christina Martinez Louie Copelin             | Rat Terrier | 155        |
| 6    | GCHB CH Rip It Up Never Say Never                    | Patricia Smith                                               | Rat Terrier | 130        |
| 7    | GCH CH Raganrat I Am A Conqueror                     | Darice Ragan                                                 | Rat Terrier | 120        |
| 7    | GCH CH Turn Slice Of Heaven BN RE NA NF BCAT         | Susan R Mulligan Susan D Turner                              | Rat Terrier | 120        |
| 9    | CH River Ridge Rocket Man CA BCAT                    | Lorraine Capurso Stacy McWilliams                            | Rat Terrier | 115        |
| 10   | Sahuaro Sunset Skippin Cj Pacific Rim                | Aysha Haines Christina Martinez Jackson Radkie               | Rat Terrier | 110        |
| 11   | CH Seegmillers Ways 2b Wicked                        | Kimberly Seegmiller Brandy Pettry                            | Rat Terrier | 75         |
| 12   | GCH CH River Ridge s Top Shelf NAJ NF                | Stacy Zimmerman Stacy McWilliams                             | Rat Terrier | 70         |
| 12   | CH Felixville s Skippin Cj Rougarou RN CA            | Joanna B Plattsmier                                          | Rat Terrier | 70         |
| 14   | GCH CH Srk K2 Zero Sight Adjustment                  | Rebekah Anthony                                              | Rat Terrier | 65         |
| 14   | GCH CH Seegmillers Tuffenuff To Envy RN              | Mrs. Kimberly Seegmiller Mrs. Brandy Pettry                  | Rat Terrier | 65         |
| 14   | CH Aacres Be My Valentine Icon                       | Renee L. Morgan Ferric Towell                                | Rat Terrier | 65         |

# Conformation

## AKC ALL-BREED STANDINGS

### 2018 Rat Terriers

The Canine Chronicle  
Statistics thru November 30, 2018

| Rank | Name                                                  | Sex | Points | BIS | GRP1 | Owner                                    |
|------|-------------------------------------------------------|-----|--------|-----|------|------------------------------------------|
| 1    | GCHS CH Felixville's Skippin Cj Tooloulou             | F   | 1111   | 0   | 5    | T Little/C Martinez                      |
| 2    | GCHS CH Evanlee's Glory Bound                         | M   | 463    | 0   | 0    | A Morris/D MCMAHANT/T Kallas             |
| 3    | GCHB CH Skippin Cj Cruzin At Gallery                  | M   | 332    | 0   | 0    | S Halma/C Martinez/L Pinkey              |
| 4    | GCHS CH River Ridge's When Dreams Take Flight         | M   | 273    | 0   | 0    | S McWilliams/J Gardner/D Mapley/D Hilema |
| 5    | GCHB CH Aacres R E S P E C T @ Dharts                 | F   | 264    | 0   | 0    | C Downey Hart                            |
| 6    | GCHB CH Rnb's Blue Chip Boy                           | M   | 122    | 0   | 0    | S Cadell                                 |
| 7    | GCHS CH Hdk K2's Shockwave@Bellridge                  | M   | 113    | 0   | 1    | T Kallas                                 |
| 8    | GCH CH Seegmillers F@Rt Gun                           | M   | 104    | 0   | 0    | K Seegmiller                             |
| 9    | GCH CH Skippin Cj Cruzin Woody @ Blackwood            | M   | 95     | 0   | 0    | C Martinez/J Ader/J Sharp                |
| 10   | GCHB CH Golden Hills Genuine Reflection @ Buzablu     | F   | 79     | 0   | 0    | A Burns/L Lee                            |
| 11   | CH Seegmillers Make It Look Easy                      | F   | 67     | 0   | 0    | K Seegmiller/L Fast                      |
| 12   | GCH CH Timberlane Tazer                               | M   | 58     | 0   | 0    | B Amico/S McWilliams                     |
| 13   | CH Bellridge's It Takes A Village                     | M   | 57     | 0   | 0    | B Trammell/F Trammell/K Jepson/E Blair   |
| 14   | CH Indigo Igo Li'L Tequilas Legacy A Vision Of Kaizen | F   | 54     | 0   | 0    | J Ferguson/T Carter/R Carter             |
| 15   | GCH CH Rosethorn I'M A Copa Showgirl                  | F   | 39     | 0   | 0    | K Frazier/J Frazier                      |
| 16   | GCH CH King Pen's Game On                             | M   | 36     | 0   | 0    | G Harlamoff/R Draper                     |
| 17   | GCH CH Felixvilles Skippin Cj Lucky Traveling Gal     | F   | 31     | 0   | 0    | J Sharp/C Martinez/L Copelin             |
| 17   | GCHS CH Indigo Igo He's All Evans Sgk                 | M   | 31     | 0   | 0    | J Ferguson                               |
| 19   | GCHG CH Rock-E-Hill Tennessee                         | M   | 30     | 0   | 0    | L Hibbard                                |
| 19   | CH Seegmillers Ways 2b Wicked                         | M   | 30     | 0   | 0    | K Seegmiller/B Pettry                    |



# Conformation

## AKC BREED STANDINGS

### 2018 Rat Terriers

The Canine Chronicle  
Statistics thru November 30, 2018

| Rank | Name                                              | Sex | Points | BIS | GRP1 | Owner                                    |
|------|---------------------------------------------------|-----|--------|-----|------|------------------------------------------|
| 1    | GCHS CH River Ridge's When Dreams Take Flight     | M   | 237    | 0   | 0    | S McWilliams/J Gardner/D Mapley/D Hilema |
| 2    | GCHS CH Felixville's Skippin Cj Tooloulou         | F   | 201    | 0   | 5    | T Little/C Martinez                      |
| 3    | GCHS CH Evanlee's Glory Bound                     | M   | 199    | 0   | 0    | A Morris/D MCMAHAN/T Kallas              |
| 3    | GCHB CH Aacres R E S P E C T @ Dharts             | F   | 199    | 0   | 0    | C Downey Hart                            |
| 5    | GCHB CH Skippin Cj Cruzin At Gallery              | M   | 109    | 0   | 0    | S Halma/C Martinez/L Pinkey              |
| 6    | GCHB CH Golden Hills Genuine Reflection @ Buzablu | F   | 79     | 0   | 0    | A Burns/L Lee                            |
| 7    | GCHS CH Hdk K2's Shockwave@Bellridge              | M   | 68     | 0   | 1    | T Kallas                                 |
| 8    | GCH CH Seegmillers F@Rt Gun                       | M   | 60     | 0   | 0    | K Seegmiller                             |
| 9    | GCH CH Timberlane Tazer                           | M   | 58     | 0   | 0    | B Amico/S McWilliams                     |
| 10   | GCHB CH Rnb's Blue Chip Boy                       | M   | 55     | 0   | 0    | S Cadell                                 |
| 11   | GCH CH Rosethorn I'M A Copa Showgirl              | F   | 39     | 0   | 0    | K Frazier/J Frazier                      |
| 11   | GCH CH Skippin Cj Cruzin Woody @ Blackwood        | M   | 39     | 0   | 0    | C Martinez/J Ader/J Sharp                |
| 13   | GCH CH King Pen's Game On                         | M   | 36     | 0   | 0    | G Harlamoff/R Draper                     |
| 14   | GCHS CH Indigo Igo He's All Evans Sgk             | M   | 31     | 0   | 0    | J Ferguson                               |
| 14   | GCH CH Felixvilles Skippin Cj Lucky Traveling Gal | F   | 31     | 0   | 0    | J Sharp/C Martinez/L Copelin             |
| 16   | GCHG CH Rock-E-Hill Tennessee                     | M   | 30     | 0   | 0    | L Hibbard                                |
| 16   | CH Seegmillers Ways 2b Wicked                     | M   | 30     | 0   | 0    | K Seegmiller/B Pettry                    |
| 18   | GCH CH Evanlee's Dark Side Of The Moon            | M   | 28     | 0   | 0    | L Kendrick/H Kendrick                    |
| 19   | GCH CH Rosethorn Tokyo Drift                      | M   | 27     | 0   | 0    | K Frazier/J Frazier                      |
| 20   | CH Bellridge's It Takes A Village                 | M   | 25     | 0   | 0    | B Trammell/F Trammell/K Jepson/E Blair   |



# Conformation

## AKC GRAND CHAMPIONSHIP STANDINGS

### 2018 Rat Terriers

The Canine Chronicle  
Statistics thru November 30, 2018

| Rank | Name                                                    | Sex | Points | Owner                                    |
|------|---------------------------------------------------------|-----|--------|------------------------------------------|
| 1    | GCHS CH River Ridge's When Dreams Take Flight           | M   | 228    | S McWilliams/J Gardner/D Mapley/D Hilema |
| 2    | GCHS CH Felixville's Skippin Cj Tooloulou               | F   | 205    | T Little/C Martinez                      |
| 3    | GCHB CH Aacres R E S P E C T @ Dharts                   | F   | 178    | C Downey Hart                            |
| 4    | GCHS CH Evanlee's Glory Bound                           | M   | 172    | A Morris/D MCMAHAN/T Kallas              |
| 5    | GCHB CH Skippin Cj Cruzin At Gallery                    | M   | 133    | S Halma/C Martinez/L Pinkey              |
| 6    | GCHB CH Golden Hills Genuine Reflection @ Buzablu       | F   | 116    | A Burns/L Lee                            |
| 7    | GCHB CH Rnb's Blue Chip Boy                             | M   | 97     | S Cadell                                 |
| 8    | GCHS CH Hdk K2's Shockwave@Bellridge                    | M   | 71     | T Kallas                                 |
| 9    | GCH CH Seegmillers F@Rt Gun                             | M   | 67     | K Seegmiller                             |
| 9    | GCH CH Felixvilles Skippin Cj Lucky Traveling Gal       | F   | 67     | J Sharp/C Martinez/L Copelin             |
| 11   | GCHG CH Rock-E-Hill Tennessee                           | M   | 46     | L Hibbard                                |
| 12   | GCHS CH Trimark's Ooh La-La-Polka-Dah                   | F   | 42     | B Veltri                                 |
| 13   | GCH CH River Ridge's Designed 2 Entice U                | M   | 38     | S Zimmerman/S McWilliams                 |
| 14   | GCH CH Rosethorn I'M A Copa Showgirl                    | F   | 37     | K Frazier/J Frazier                      |
| 14   | GCHS CH Indigo Igo He's All Evans Sgk                   | M   | 37     | J Ferguson                               |
| 16   | GCHB CH Buzablu 3rd Rock From The Sun                   | F   | 36     | L Lee/J Leigh                            |
| 17   | GCH CH Wild Heart Take A Chance On Me River Ridge CA    | M   | 35     | C WALLWORK/S McWilliams                  |
| 18   | GCHS CH Evanlee May D'Odds B Evr N Ur Favor River Ridge | M   | 32     | K Bosse/J Gardner/S McWilliams           |
| 19   | GCH CH Evanlee's Dark Side Of The Moon                  | M   | 31     | L Kendrick/H Kendrick                    |
| 20   | GCH CH Skippin Cj Cruzin Woody @ Blackwood              | M   | 30     | C Martinez/J Ader/J Sharp                |

# Conformation

## AKC OWNER-HANDLER TOP FIFTEEN STANDINGS

### 2019 Rat Terriers

The Canine Chronicle  
Thru November 30, 2018

| Rank | Dog Name                                          | Owner-Handled Name                                    | Breed       | OHS Points |
|------|---------------------------------------------------|-------------------------------------------------------|-------------|------------|
| 1    | GCH CH Hime Masako Of Miyuki                      | Yolanda Cunningham Laura Vaught Colleen McKee-Sanchez | Rat Terrier | 120        |
| 2    | CH Seegmillers Make It Look Easy                  | Kimberly Seegmiller Lila Fast                         | Rat Terrier | 75         |
| 3    | CH Seegmillers Ways 2b Wicked                     | Kimberly Seegmiller Brandy Pettry                     | Rat Terrier | 45         |
| 4    | CH Aacres Be My Valentine Icon                    | Renee L. Morgan Fenric Towell                         | Rat Terrier | 40         |
| 4    | CH Kenann Hunk Of Burnin Luv Rip It Up            | Patricia Smith                                        | Rat Terrier | 40         |
| 6    | Evanlees Take It Outside BCAT                     | Mrs. Donna McMahan N Naomi Farnald Tracey A Kallas    | Rat Terrier | 35         |
| 6    | GCH CH Rosethorn Tokyo Drift                      | Kim Frazier James Frazier                             | Rat Terrier | 35         |
| 8    | Fireball s Gunpowder N Lace                       | Edithmary Stenz Norine Lehar                          | Rat Terrier | 30         |
| 9    | Sahuaro Sunset Skippin Cj Pacific Rim             | Aysha Haines Christina Martinez Jackson Radkie        | Rat Terrier | 25         |
| 10   | GCH CH Felixvilles Skippin Cj Lucky Traveling Gal | Mr. Jason Sharp Christina Martinez Louie Copelin      | Rat Terrier | 20         |
| 10   | Raganrat Dbl Dbl Chocolate Q                      | Harriett Browne Darice Ragan                          | Rat Terrier | 20         |
| 10   | Rip It Up Tag Your It                             | Lesa Barnett Patricia Smith                           | Rat Terrier | 20         |
| 10   | GCH CH Skippin Cj Cruzin Woody Blackwood          | Christina Martinez Jackie Ader Jason Sharp            | Rat Terrier | 20         |
| 14   | CH K2 s Kiss My Ice Of Erandi                     | Heidi Sparks Tracey A Kallas                          | Rat Terrier | 15         |
| 14   | River Ridge Got My Eye On U                       | Stacy Zimmerman Stacy McWilliams                      | Rat Terrier | 15         |
| 14   | River Ridge s Runnin N Sync                       | Rebecca Guaraldo Fred Guaraldo                        | Rat Terrier | 15         |
| 14   | GCH CH Turn Slice Of Heaven BN RE NA NF BCAT      | Susan R Mulligan Susan D Turner                       | Rat Terrier | 15         |







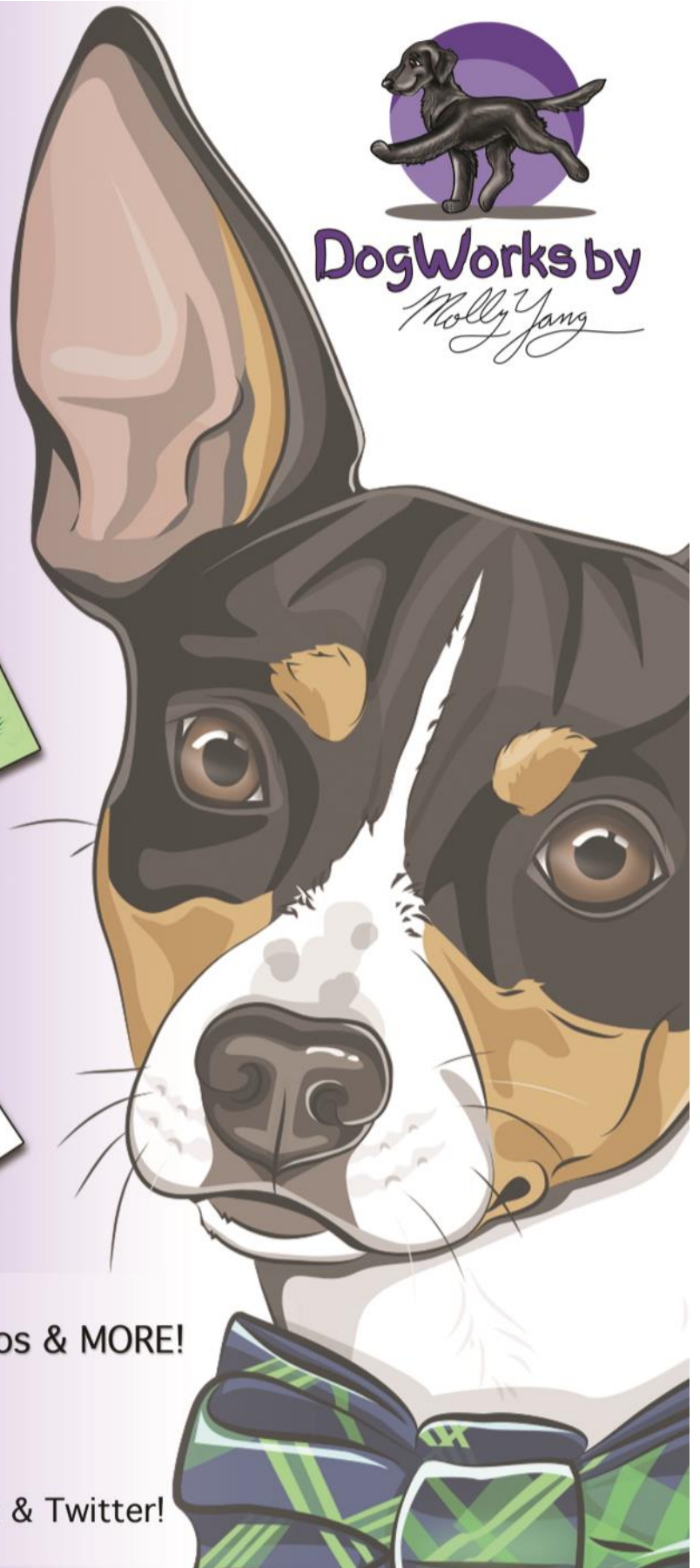
**Mom!! Tell Santa that I have been a good boy ... please!!**

**“Jaxson”**

**Photo by Jackie Maye Olsen**



**DogWorks by**  
*Molly Yang*



**Pet Portraits, Illustrations, Logos & MORE!**

**Check us out at:**

[www.mollyyang.net](http://www.mollyyang.net)

**Follow us on Facebook, Instagram & Twitter!**

# Support MARTC

amazon smile



You shop. Amazon gives.

As an IRS 501c3 non-profit organization, MARTC has partnered with Amazon Smile. Members as well as family and friends may support the club by signing into Amazon through [smile.amazon.com](https://smile.amazon.com) and selecting Mid-Atlantic Rat Terrier Club as their non-profit designation. Make purchases on Amazon via the [smile.amazon.com](https://smile.amazon.com) link and Amazon will give a percentage of the proceeds to the club. Amazon customers are not charged for this. It's Amazon's way to support non-profits. So, we hope that you will consider choosing MARTC as your designated non-profit to support.

# Blast to the Past



My Grandad with his terrier, Sportie, in Illinois. These little dogs were seen a lot on the farms back in the 30s and 40s.

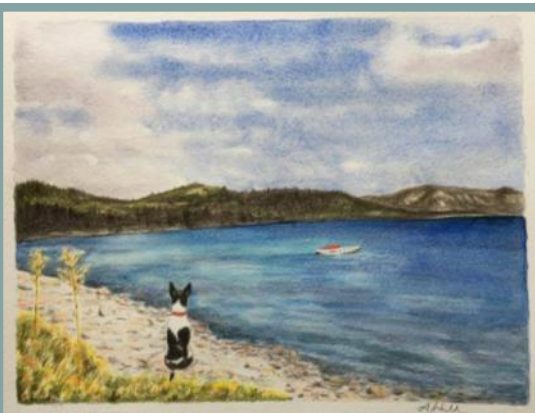
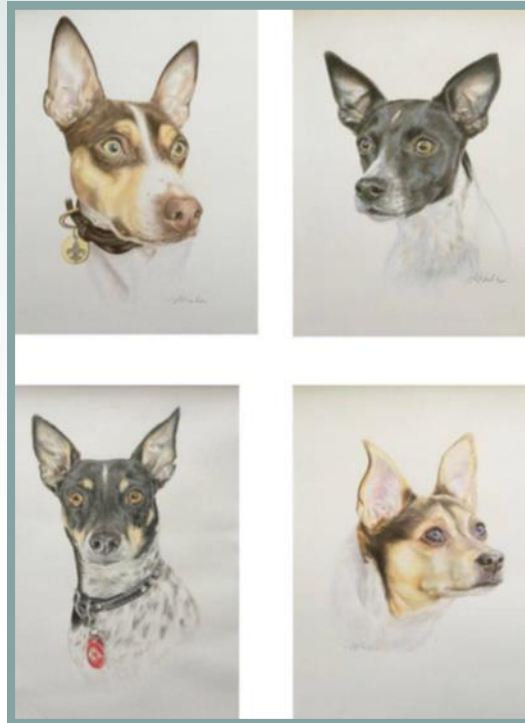
Submitted by  
Vickey Meyer

Please send your oldies but goodies to us for the next issue.

# The Art of Amanda Hall

## “YowYowtails”

The “eyes” say it ALL



Memories captured  
[Facebook.com/Yowyowtails](https://www.facebook.com/Yowyowtails)



**CHECK OUT**

**Amanda’s**

**Facebook art  
page:**

**[www.facebook.com/  
Yowyowtails](https://www.facebook.com/Yowyowtails)**

**And Bogart’s**

**blog at: [https://](https://www.facebook.com/RoethornTerriers)**

**[www.facebook.com/  
RoethornTerriers](https://www.facebook.com/RoethornTerriers)**

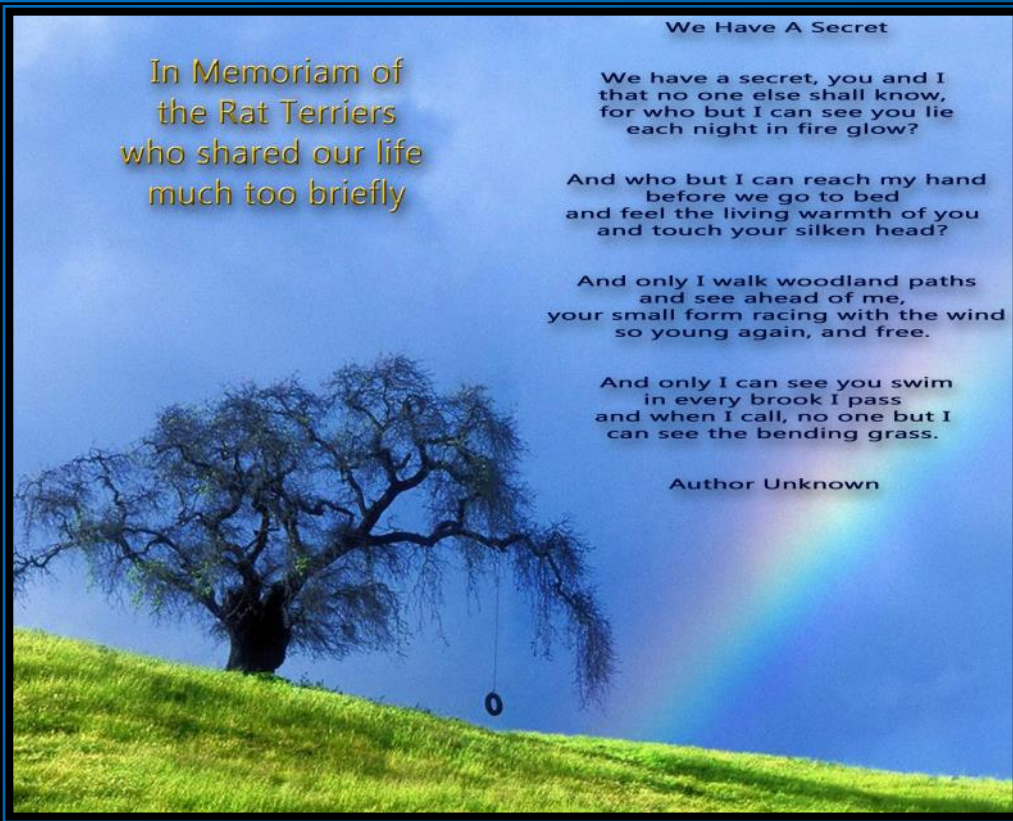


**Rattiescapes**

by Amanda Hall

If you can imagine it I can paint it





In Memoriam of  
the Rat Terriers  
who shared our life  
much too briefly

We Have A Secret

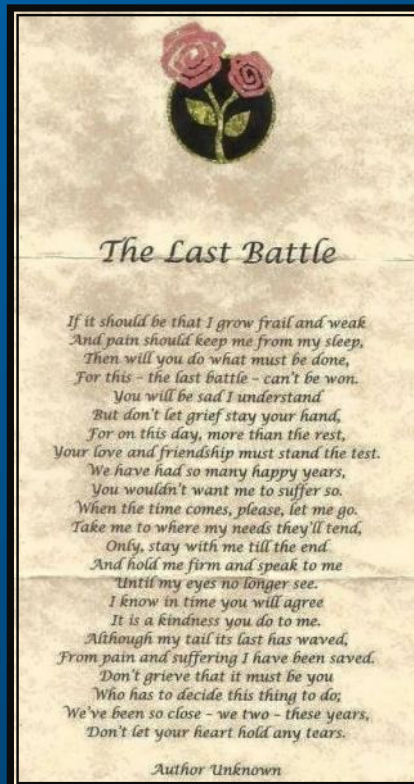
We have a secret, you and I  
that no one else shall know,  
for who but I can see you lie  
each night in fire glow?

And who but I can reach my hand  
before we go to bed  
and feel the living warmth of you  
and touch your silken head?

And only I walk woodland paths  
and see ahead of me,  
your small form racing with the wind  
so young again, and free.

And only I can see you swim  
in every brook I pass  
and when I call, no one but I  
can see the bending grass.

Author Unknown



*The Last Battle*

*If it should be that I grow frail and weak  
And pain should keep me from my sleep,  
Then will you do what must be done,  
For this - the last battle - can't be won.  
You will be sad I understand  
But don't let grief stay your hand,  
For on this day, more than the rest,  
Your love and friendship must stand the test.  
We have had so many happy years,  
You wouldn't want me to suffer so.  
When the time comes, please, let me go.  
Take me to where my needs they'll tend,  
Only, stay with me till the end  
And hold me firm and speak to me  
Until my eyes no longer see.  
I know in time you will agree  
It is a kindness you do to me.  
Although my tail 'tis last has waved,  
From pain and suffering I have been saved.  
Don't grieve that it must be you  
Who has to decide this thing to do;  
We've been so close - we two - these years,  
Don't let your heart hold any tears.*

Author Unknown

This page is reserved as a memorial for the special dogs that we lose. If you have had a loss and would like your dog honored here, please contact us.



### Official Standard of the Rat Terrier

**General Appearance:** The Rat Terrier was originally bred for ratting and farm work. A multipurpose companion dog that is capable of hunting rodents and vermin above and below ground, and to course small game. He is a sturdy, compact, small-to-medium sized parti-colored dog giving the appearance of elegance and fitness, denoting speed, power and balance. Honorable scars or a couple of broken or missing canines or incisors teeth are not to be faulted. The following is a description of the ideal Rat Terrier. Variations are penalized to the extent of the deviation.

**Size, Proportion, Substance:** *Size* - There are two separate size divisions. Miniature - At least 10 inches, not to exceed 13 inches. Standard - over 13 inches, and up to and including 18 inches in height measured at the withers. Any dog six months of age or older measuring less than 10 inches, or any dog over 18 inches are to be disqualified. *Proportion* - The Rat Terrier is just slightly longer than tall. The height, measured vertically from the ground to the highest point of the withers, is slightly less than the length, measured horizontally from the point of the shoulders to the point of the buttocks. Shortness in leg is a serious fault. *Substance* - Moderate bone in proportion to size. A well-balanced, hard-muscled dog with smooth lines under taut skin. This dog should not be rangy nor fine boned and toyish, and never bulky or coarse. They are shown in good, hard physical working condition.

**Head:** The *head* resembles a smooth, blunt wedge from a front or profile view. When seen from the front, the head widens gradually towards the base of the ears in an unbroken line and is well filled up under the eyes. The *expression* is intelligent, alert and full of interest. The *eyes* are not large. They are obliquely set wide apart and are oval in shape. Eye color varies with coat color from darkest brown to hazel. Eye rim pigmentation corresponds with nose color and facial markings. Gray eyes are acceptable in blue or blue-fawn dogs only, being a serious fault in other colorations. Any blue in the eye(s) is a disqualification. *Ears* - Set on the top outer edge of the skull, V-shaped, with the length in proportion to the head moderately pointed at the tip. When viewed from the side, the base of the ear is on line with the outer corner of the eye. Ears should match in shape and carriage when alert, and can be carried erect, semi-erect and tipped, or button without preference. When alert, a rose ear is a fault. Cropped ears are a disqualification. *Skull* -When viewed from the front the skull is moderate in width, relatively flat on top, and rounded at crown and the sides as it widens smoothly from the corner of the eyes to the base of the ears. The occiput is not prominent. The cheeks are flat and well-muscled, but never bulging. The stop is moderate but distinct. The *muzzle* is strong, just slightly shorter in length than the skull and tapers smoothly along the sides to the nose. The nose color corresponds with the body color and is entirely pigmented. Flesh-colored noses are considered a fault in lemon or light apricot colorations while being a serious fault in other colorations. Seasonal fading is permitted. The lips are clean and tight, and correspond in color with the nose leather or may be pink; either solid or spotted is acceptable. The lower jaw and teeth are strong and well



developed with no sign of being snipey or weak. **Bite-** A scissor bite is preferred. A level bite is acceptable.

**Neck, Topline, Body:** **Neck** - Length of neck is in proportion to the head. Strong, arched along the crest and dry, the neck blends smoothly into the flat shoulder blades. **Topline** - Smooth and blending from the back through the loin and set of the tail. **Body** - The body is compact, strong and flexible with well sprung ribs. The brisket extends to the elbow. When viewed from the front, the ribs appear to be oval. The Rat Terrier, while muscled and fit, has flat muscles that blend into the body. The chest is moderately wide and well filled with a discernible forechest. The underline ascends gradually with the ribs extending well back to a moderate tuck-up. **Back** - The back is level and firm from the withers to the loin. The short loin has a slight muscular arch blending into the gently rounded croup. **Tail** - The tail set is a continuation of the spine. Tails are customarily docked between the second and third joint, or can be a natural bobtail or left naturally long and tapering to the hock joint. Length is unimportant. The carriage is variable depending on attitude, carried from slightly below horizontal to almost erect, but not over the back or a ring tail.

**Forequarters:** The shoulder blades are well laid back with flat muscles providing enough space between the shoulder blades to allow for free movement. The shoulder blades and the upper arms are nearly equal in length and well set back so that the elbows fall directly under the highest point of the shoulder blade. The depth of the body at the elbow is the same distance as from the elbow to the ground. The forelegs stand straight and parallel with elbows turning neither in nor out. The pasterns are slightly sloping when viewed from the side. The feet are oval in shape. The toes turn neither in nor out, are compact, moderately arched, with thick pads and strong nails. The front dewclaws may be removed.

**Hindquarters:** The hindquarters are muscular but smooth and in balance with the forequarters. They should not be bulging or coarse. Stifles are well-bent with short hocks that are parallel and perpendicular to the ground. The hind feet although slightly smaller are similar to the front feet. Rear dewclaws are removed.

**Coat:** Short, close lying, smooth and shiny coat. Texture varies; a very slight ruff or wave along the back is allowed, but undesirable. Any suggestion of kink or curl is cause for disqualification. Whiskers must not be removed. Absence of coat (total genetic hairlessness) is a disqualification.

**Color:** Any variation of pied patterning is acceptable. Pied is described as comparatively large patches of one or more colors in combination with white. Except for the "solid white" extreme piebald dog with only mottled/spotted skin. Disqualification - Rat Terriers are never a solid ground color without white markings, or bi-colored without one color being white. Acceptable colors with or without "tan points", include the predominate black, or chocolate, red, apricot, blue, fawn, tan, lemon, or white. Intense, dark shades of color with clearly defined and delineated coloration is preferred. White on the body is preferred to be between 10 percent and 90 percent, but all patterns; spotted, patched or splashed with white in conjunction with (or without) any combination of white on the face, head or ears are equally acceptable without





AMERICAN  
KENNEL CLUB™

prejudice. "Tan points" are common and vary in shades of cream to rust. Badger markings are acceptable. Speckling, ticking and mottling is common, but heavy ticking is undesirable. Sabbling is permitted in the coat or as shading on the head or penciling on the toes. A "black mask/black muzzle", on a dog not having black as coloration is to be seriously faulted. A few white hairs do not constitute an acceptable marking. A minimum white marking consists of a patch or strip of white with underlying white/pink skin on the forechest or body that exceeds one inch. Less than one inch of white at its widest dimension is a disqualification. Brindle or merle color patterns are disqualifications.

**Gait:** A ground-covering efficient trot with good reach and drive suggesting agility, speed and power. The legs are parallel at a trot, but as speed increases, the legs converge toward a center line. There should be no elbowing out, weaving or rolling action while in motion.

**Temperament:** Keenly observant, devoted, full of energy, yet easily trained and obedient to command. The Rat Terrier is a non-sparring breed and generally friendly with other dogs, but may be reserved with strangers. Submissiveness is not a fault. Overt aggression and excessive shyness should be penalized.

**Disqualifications:** *Any dog over six months of age measuring less than 10 inches, or over 18 inches. Any blue color in the eye(s). Cropped ears. An absence of coat (genetic hairlessness). Any suggestion of kink or curl, or coat type other than described. Solid colorations (other than white). Bi-colors without white, or dogs with a patch or strip of white measuring less than one inch at its widest dimension. Brindle or merle color patterns.*

**Approved November 11, 2009**

**Effective July 1, 2010**

# Shameless Plug for ...

## NEW members!!!

We hope that you have enjoyed reading our newsletters and are finding them helpful, enjoyable, and worthy of archiving on your computer for future reference.

Please consider joining our MCRTC family and developing friendships with people who share a common interest in the Rat Terrier breed at all levels and becoming a part of the work to continue to help the breed grow and prosper within AKC rules and guidelines.

While MCRTC is not an AKC affiliated club at this time, it is the hope and future goal to become an AKC Specialty Club. As has been mentioned previously in this newsletter, you can become a member and not live in the Mid-Atlantic region. How exciting it is to anticipate the growth of a club with the goals of benefitting the breed, educating the public, and developing friendships all across the country!!

We welcome people who participate in conformation, agility, barn hunt, lure coursing, rally, obedience and any other venues with this delightful breed. More importantly, we welcome people who have the pets that never compete in any venue because, for all of us, our dogs are pets first and the rest is frosting on top.

Old and new members will be welcomed and appreciated. Let's set the goal together of developing an awesome platform from which to promote our breed!!!



Find us on  
**Facebook**

<https://www.facebook.com/groups/midatlanticratterrierclub/>

# MONTGOMERY COUNTY RAT TERRIER CLUB MEMBERSHIP APP



**Type of Membership:**

- Regular-\$25.00**  
Individual adult member residing in the Montgomery County. All privileges, *including* the right to vote & hold office.
- Regular Household-\$30.00**  
Two adult members (same household) in the Montgomery County. All privileges, *including* the right to vote & hold office.
- Associate-\$20.00**  
Individual adult member residing outside the Montgomery County. All privileges, *except* the right to vote & hold office.
- Associate Household \$25.00**  
Two adult members (same household) outside the Montgomery County. All privileges, *except* the right to vote & hold office.
- Junior-\$15.00**  
Individual under 18 years of age (resident of any state). All privileges, *except* the right to vote & hold office.

\*The club shall include only boundaries within Montgomery County, PA including: greater Lehigh Valley communities north to Scranton, east to Scarsdale NY, south to Philadelphia and west to Lancaster.

Name(s): \_\_\_\_\_

Address: \_\_\_\_\_

City: \_\_\_\_\_ State: \_\_\_\_\_ Zip Code: \_\_\_\_\_

Home Phone: \_\_\_\_\_ Cell Phone: \_\_\_\_\_

Email: \_\_\_\_\_

*Please check one or more of the following that best describes your interests:*

- Agility  Barn Hunt  Breeder  Conformation  Obedience  Pet Owner  Other \_\_\_\_\_

*Tell us about yourself and your dogs...*

We would love to hear about your hobbies, accomplishments, show brags or how your dogs like to spend their time. Please include registered names and call names for your dogs, as well as anything else you would like to share!

*If you are a member of any other dog clubs, please list them here. (Note any Board or other elected positions you currently hold.)*

*This club is run entirely by volunteers, if you would like to contribute, please list any special skills or areas of interest you may have.*

*Please provide the names of two current MCRTC members who have agreed to sponsor your membership in the Club.*

1. \_\_\_\_\_ 2. \_\_\_\_\_

You agree that, if accepted in membership, you will abide by the MCRTC Constitution, Bylaws, and Codes for Ethical Behavior and Good Sportsmanship. You will also adhere to the rules set forth by AKC and their Code of Sportsmanship.

**Consent to Electronic Communications**

You understand and agree to accept notification of Club meetings, dues notices, minutes, and newsletters, as well as Board of Director notifications of meetings, and minutes from said meetings via email. This authorization (which is revocable in writing) also releases the Club from liability should the notification be received late or not received by the member due to circumstances beyond the Club's control.

**Electronic Signatures**

By typing your name below, you understand that you are electronically signing this document and are agreeing to all of the policies, terms and conditions set forth above. If you understand, accept and agree to the policies, terms and conditions set out above, then type in your name on the line below to acknowledge your acceptance.

Member Name: \_\_\_\_\_ Date: \_\_\_\_\_

Member Name: \_\_\_\_\_ Date: \_\_\_\_\_

**For Quickest Processing:**

Send Dues via PayPal to:  
MidAtlanticRatTerrier@yahoo.com

Applications will also be accepted electronically to the above e-mail address

**For Regular Mail:**

Make checks payable to **MARTC** and mail to: Jackie Maye, PO Box 233, Hellertown, PA 18055

**MONTGOMERY COUNTY RAT TERRIER CLUB 2019 MEMBERSHIP RENEWAL** (Updated 11.14.2018)



**Type of Membership Renewal:**

- Regular-\$25.00**  
Individual adult member residing in the Montgomery County. All privileges, *including* the right to vote & hold office.
- Regular Household-\$30.00**  
Two adult members (same household) in the Montgomery County. All privileges, *including* the right to vote & hold office.
- Associate-\$20.00**  
Individual adult member residing outside the Montgomery County. All privileges, *except* the right to vote & hold office.
- Associate Household \$25.00**  
Two adult members (same household) outside the Montgomery County. All privileges, *except* the right to vote & hold office .
- Junior-\$15.00**  
Individual under 18 years of age (resident of any state) . All privileges, *except* the right to vote & hold office.

*\*The club shall include only boundaries within Montgomery County, PA including: greater Lehigh Valley communities north to Scranton, east to Scarsdale NY, south to Philadelphia and west to Lancaster.*

Name (or Names if Household): \_\_\_\_\_

*\*Please update any address, email or other information which has changed. If there are no changes to the information provided on your original application, please leave these fields blank.*

Address\*: \_\_\_\_\_

City\*: \_\_\_\_\_ State\*: \_\_\_\_\_ Zip Code\*: \_\_\_\_\_

Home Phone\*: \_\_\_\_\_ Cell Phone\*: \_\_\_\_\_

Email\*: \_\_\_\_\_

*Please check one or more of the following that best describes your interests\*:*

- Agility  Barn Hunt  Breeder  Conformation  Obedience  Pet Owner  Other \_\_\_\_\_

*Tell us about yourself and your dogs...*

We would love to hear about your hobbies, accomplishments, show brags or how your dogs like to spend their time. Please include registered names and call names for your dogs, as well as anything else you would like to share!

\_\_\_\_\_  
\_\_\_\_\_

*If you are a member of any other dog clubs, please list them here. (Note any Board or other elected positions you currently hold.)*

\_\_\_\_\_  
\_\_\_\_\_

*This club is run entirely by volunteers, if you would like to contribute, please list any special skills or areas of interest you may have.*

You agree that, if accepted in membership, you will abide by the MCRTC Constitution, Bylaws, and Codes for Ethical Behavior and Good Sportsmanship. You will also adhere to the rules set forth by AKC and their Code of Sportsmanship.

**Consent to Electronic Communications**

You understand and agree to accept notification of Club meetings, dues notices, minutes, and newsletters, as well as Board of Director notifications of meetings, and minutes from said meetings via email. This authorization (which is revocable in writing) also releases the Club from liability should the notification be received late or not received by the member due to circumstances beyond the Club's control.

**Electronic Signatures**

By typing your name below, you understand that you are electronically signing this document and are agreeing to all of the policies, terms and conditions set forth above. If you understand, accept and agree to the policies, terms and conditions set out above, then type in your name on the line below to acknowledge your acceptance.

Member Name: \_\_\_\_\_ Date: \_\_\_\_\_

Member Name: \_\_\_\_\_ Date: \_\_\_\_\_

**For Quickest Processing:**

Send Dues via PayPal to:  
MidAtlanticRatTerrier@yahoo.com

Applications will also be accepted electronically to the above e-mail address

**For Regular Mail:**

Make checks payable to **MARTC** and mail to: Jackie Maye, PO Box 233, Springtown PA 18081

# The faces we adore

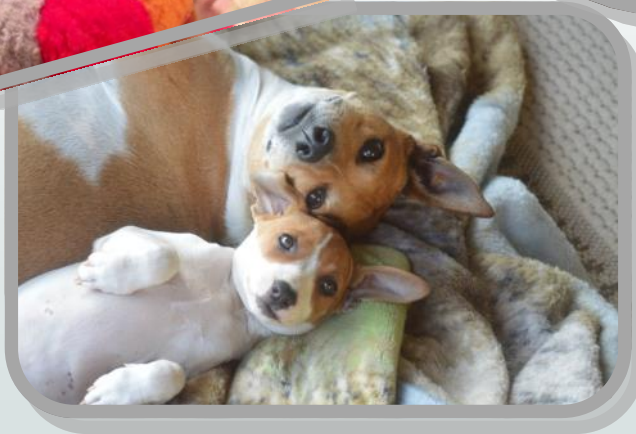
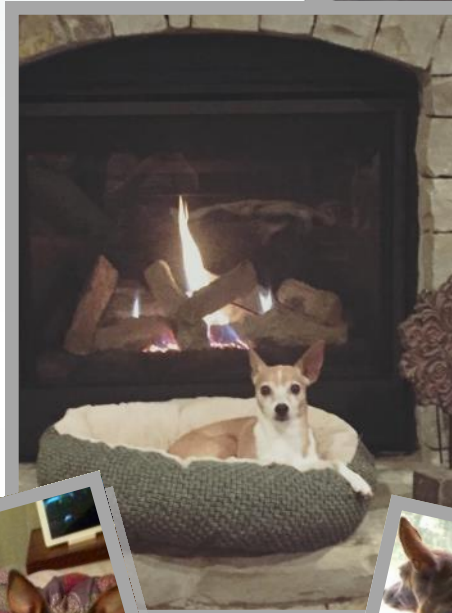


Thank you to all who have given permission to use their photo in our candid section.

I am always looking for more photos so please send to me.

[midatlanticrtc@cox.net](mailto:midatlanticrtc@cox.net)

# and ... Doing what they do



Don't forget to send us your fun photos to include in future issues of our newsletter.

# ACRONYMS

|               |                                                   |
|---------------|---------------------------------------------------|
| <b>ADCH</b>   | Agility Dog Champion (USDAA)                      |
| <b>AGCH</b>   | Agility Grand Champion                            |
| <b>AKC</b>    | American Kennel Club                              |
| <b>ADM</b>    | Award of Merit                                    |
| <b>AN</b>     | Advanced Nosework (UKC)                           |
| <b>AX</b>     | Agility Excellent                                 |
| <b>AJX</b>    | Agility Jumper Excellent                          |
| <b>BCAT</b>   | CAT plus 150 points                               |
| <b>BN</b>     | Beginner Novice (obedience)                       |
| <b>CA</b>     | Coursing Ability                                  |
| <b>CAT</b>    | Coursing Ability Test                             |
| <b>CAX</b>    | Coursing Ability Excellent                        |
| <b>C-ATCH</b> | Agility Team Champion (CPE)                       |
| <b>CD</b>     | Companion Dog                                     |
| <b>CDX</b>    | Companion Dog Excellent                           |
| <b>CGC</b>    | Canine Good Citizen                               |
| <b>CGCA</b>   | Advanced Canine Good Citizen aka Community Canine |
| <b>CGCU</b>   | Canine Good Citizen Urban                         |
| <b>CH</b>     | Champion                                          |
| <b>CHIC</b>   | Canine Health Information Center                  |
| <b>CHF</b>    | Canine Health Foundation                          |
| <b>CL1-F</b>  | Canine Performance Events agility title - fun     |

|              |                                                    |
|--------------|----------------------------------------------------|
| <b>CL1-H</b> | Canine Performance Events agility title- handler   |
| <b>CL1-R</b> | Canine Performance Events agility title - regular  |
| <b>CL1-S</b> | Canine Performance Events agility title - strategy |
| <b>CM</b>    | Certificate of Merit                               |
| <b>CPE</b>   | Canine Performance Events                          |
| <b>DCAT</b>  | CAT plus 500 points                                |
| <b>ELT1</b>  | NACSW Nosework Elite, level 1.                     |
| <b>EN</b>    | Elite Nosework(UKC)                                |
| <b>FAST</b>  | Agility Fast                                       |
| <b>FCAT</b>  | CAT plus 1000 points                               |
| <b>FDC</b>   | Farm Dog Certificate (title)                       |
| <b>FDCH</b>  | Flyball Dog Champion                               |
| <b>FDGCH</b> | Flyball Dog Grand Champion                         |
| <b>GCH</b>   | Grand Champion                                     |
| <b>GCHB</b>  | Grand Champion Bronze                              |
| <b>GCHG</b>  | Grand Champion Gold                                |
| <b>GCHP</b>  | Grand Champion Platinum                            |
| <b>GCHS</b>  | Grand Champion Silver                              |
| <b>GOCH</b>  | United Grand Obedience Champion (UKC)              |
| <b>GRCH</b>  | Grand Champion (UKC)                               |
| <b>JE</b>    | Junior Earth dog (title)                           |
| <b>MACH</b>  | Master Agility Champion                            |

|              |                                                             |
|--------------|-------------------------------------------------------------|
| <b>MACH2</b> | Same as above, numeric digit counts number of times earned. |
| <b>MARTC</b> | Mid Atlantic Rat Terrier Club                               |
| <b>MCRTC</b> | Montgomery County Rat Terrier Club                          |
| <b>MCV</b>   | Master Courser Veteran                                      |
| <b>MFC</b>   | Master Fast Gold                                            |
| <b>MFPG</b>  | Master Fast Preferred Gold                                  |
| <b>MFPS</b>  | Master Fast Preferred Silver                                |
| <b>MFS</b>   | Master Silver Fast                                          |
| <b>MJB</b>   | Master Jumper Bronze                                        |
| <b>MJC</b>   | Master Jumpers Century                                      |
| <b>MJC4</b>  | Same as above, numeric digit counts number of times earned. |
| <b>MJP</b>   | Master Jumper Excellent                                     |
| <b>MJP2</b>  | Same as above, numeric digit counts number of times earned. |
| <b>MJPB</b>  | Master Bronze Jumpers with weaves Preferred                 |
| <b>MJPS</b>  | Master Silver Jumper with weaves preferred                  |
| <b>MJPS2</b> | Same as above, numeric digit counts number of times earned. |
| <b>MJS</b>   | Master Silver Jumper with weaves                            |
| <b>MJS8</b>  | Same earned eight times                                     |
| <b>MJX</b>   | Master Jumpers with weaves                                  |
| <b>MN</b>    | Master Nosework (UKC)                                       |
| <b>MX</b>    | Master Agility Excellent                                    |
| <b>MXB</b>   | Master Bronze Agility                                       |
| <b>MXF</b>   | Agility Master Fast Excellent                               |
| <b>MXG</b>   | Master Gold Agility                                         |

|                  |                                                             |
|------------------|-------------------------------------------------------------|
| <b>MXG4</b>      | Same as above, numeric digit counts number of times earned. |
| <b>MXJ</b>       | Master Excellent Jumper (agility)                           |
| <b>MXP</b>       | Master Agility Excellent Preferred                          |
| <b>MXP2</b>      | Same as above, numeric digit counts number of times earned. |
| <b>MXPB</b>      | Master Bronze Agility Preferred                             |
| <b>MXPS</b>      | Master Silver Agility Preferred                             |
| <b>MXPS2</b>     | Same as above, numeric digit counts number of times earned. |
| <b>MXS</b>       | Master Silver Agility                                       |
| <b>MXS4</b>      | Same earned four times                                      |
| <b>NA</b>        | Novice Agility                                              |
| <b>NACSW</b>     | National Association of Canine Scent Work                   |
| <b>NAJ</b>       | Novice Agility Jumper                                       |
| <b>NCH</b>       | Nosework Champion (UKC)                                     |
| <b>NF</b>        | Novice Fast                                                 |
| <b>NGC</b>       | Nosework Grand Champion (UKC)                               |
| <b>NJP</b>       | Novice Jumpers with weaves preferred                        |
| <b>NN</b>        | Novice Nosework (UKC)                                       |
| <b>NW1</b>       | Nosework – 1 target odor (NACSW)                            |
| <b>NW2</b>       | Nosework – 2 target odors (NACSW)                           |
| <b>NW3</b>       | Nosework – 3 target odors (NACSW)                           |
| <b>NW3 Elite</b> | Nosework – 3 NW3 titles                                     |
| <b>NW3-C</b>     | Nosework – Container search                                 |
| <b>NW3-I</b>     | Nosework – Interior search                                  |
| <b>NW3-E</b>     | Nosework – Exterior search                                  |



|         |                                                             |
|---------|-------------------------------------------------------------|
| MW3-V   | Nosework – Vehicle search                                   |
| QA      | Open Agility                                                |
| OF      | Open Fast                                                   |
| OFA     | Orthopedic Foundation for Animals                           |
| OFP     | Open Fast Preferred                                         |
| PAX     | Preferred Agility Excellent                                 |
| PAX6    | Same as above, numeric digit counts number of times earned. |
| PCD     | Preferred Companion Dog                                     |
| PFD     | World Canine Freestyle Organization – Beginners B           |
| PJD     | Preferred Jumpers Dog                                       |
| PR      | USDAA Performance <u>Relay??</u>                            |
| PTN     | UKC Nosework Pre-trial Novice                               |
| Q       | Qualified                                                   |
| QA      | Qualified All-Age                                           |
| RA      | Rally Advanced                                              |
| RAE     | Rally Advanced Excellent                                    |
| RATI    | Barn Hunt Instinct                                          |
| RATN    | Barn Hunt Novice                                            |
| RATO    | Barn Hunt Open                                              |
| RN      | Rally Novice                                                |
| SN      | Superior Nosework(UKC)                                      |
| SPOT    | Specialized Pet Obedience Test (UKC)                        |
| SPOT-ON | Specialized Pet Obedience Test – Outstanding Neighbor(UKC)  |
| T2B     | Time to Beat                                                |

|       |                                                             |
|-------|-------------------------------------------------------------|
| T2B2  | Same as above, numeric digit counts number of times earned. |
| T2BP  | Time to Beat Preferred                                      |
| T2BP2 | Same as above, numeric digit counts number of times earned. |
| TKA   | Trick Dog Advanced                                          |
| TKI   | Trick Dog Intermediate                                      |
| TKN   | Trick Dog Novice                                            |
| TQX   | Triple Q Excellent                                          |
| TQXP  | Triple Q Excellent Preferred                                |
| UAG-1 | United Kennel Club Agility Level 1                          |
| UCD   | United Companion Dog (UKC)                                  |
| UCDX  | United Companion Dog Excellent (UKC)                        |
| UOCH  | United Obedience Champion (UKC)                             |
| UUD   | United Utility Dog (UKC)                                    |
| UUDX  | United Utility Dog Excellent (UKC)                          |
| UKC   | United Kennel Club                                          |
| UROC  | United Rally Obedience Champion (UKC)                       |
| UROG  | United Rally Obedience Grand Champion (UKC)                 |
| URX   | United Rally Obedience Excellent (UKC)                      |
| URO1  | United Rally Obedience 1 (UKC)                              |
| URO2  | United Rally Obedience 2 (UKC)                              |
| URO3  | United Rally Obedience 3 (UKC)                              |
| UWP   | United Kennel Club Weight Pulling                           |
| XF    | Excellent Fast (agility)                                    |
|       |                                                             |

**Thank you ... Thank you!!! To our many contributors who help make our newsletter a success. Your contributions are greatly appreciated and valued.**



# **The End**

.....

**See you next issue!!**

**If you would like to see your favorite  
“end” here send us the photo to consider  
for future issues of the newsletter.**